

REPLACING THE POWER RECEPTACLE CORD FOR SIDNE

Make sure the SIDNE batteries are disconnected before you begin!

Tools Needed:

½" socket ratchet wrench

½" wrench

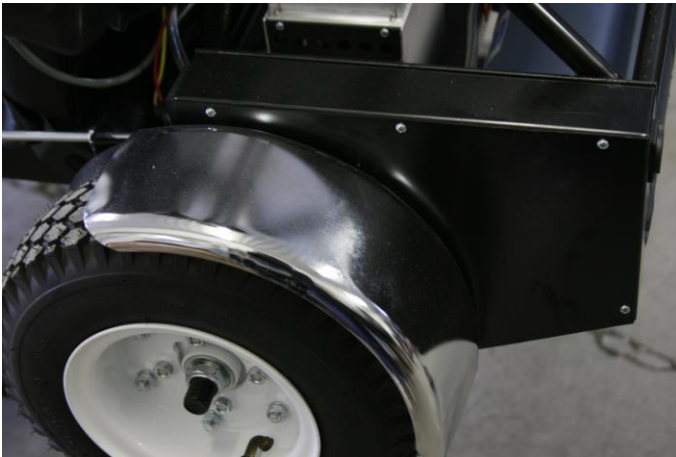
5/16" Nut driver

Wire cutter

Phillips Screwdrivers (#1 and #2)

It is easiest to place SIDNE on sawhorses, or something that puts SIDNE in a secure location, at waist level (for your comfort)

Face the SIDNE Drive Wheel



Use the ½" Ratchet Socket Wrench to remove 4 nuts



Remove the drive wheel



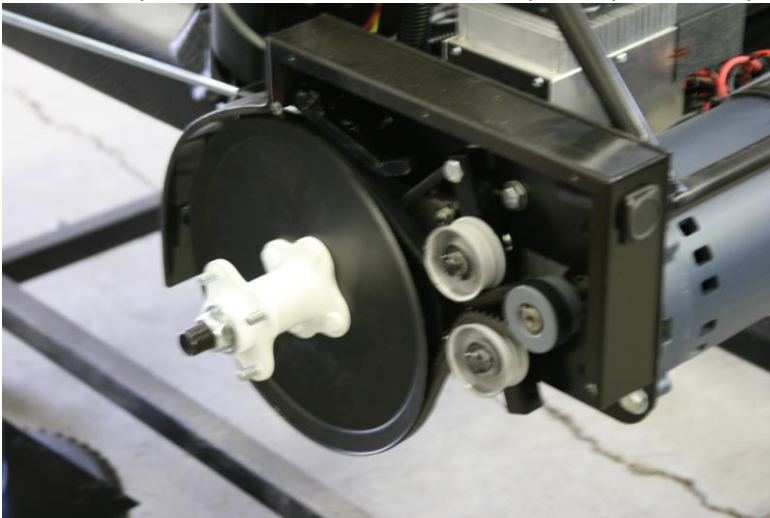
Then remove the washers, do not lose them



Remove the 5 screws that hold the side fender plate – *note the screw that is under the fender.*



The fender plate is off – we will remove the plastic power receptacle later.

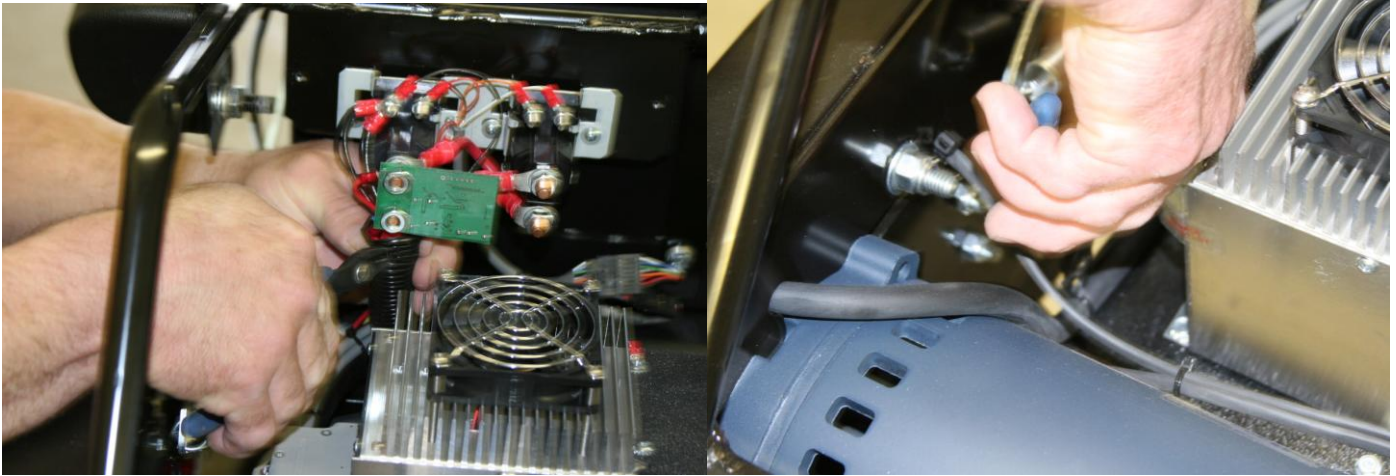


Next, remove the screws that hold the plastic cover that covers the wire connector posts.

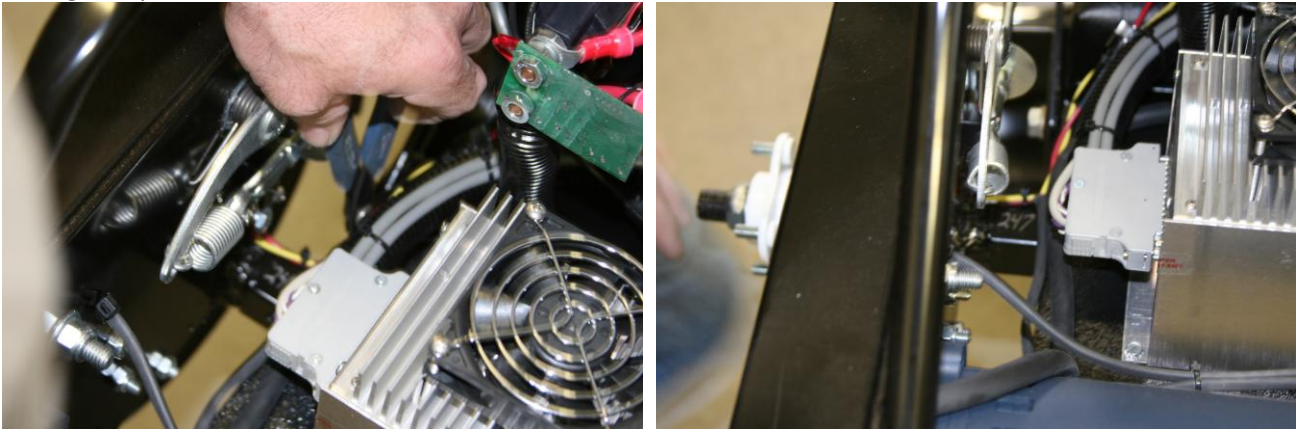


Use the wire snips to clip the plastic wire ties that secure the power receptacle cord wire(s).

There should be 3 on the bottom that go through 3 holes on the bottom plastic plate, and approximately 4 that secure the wires that go up to the wire-connector posts. **DO NOT ACCIDENTALLY CUT THE WIRES THEMSELVES.**

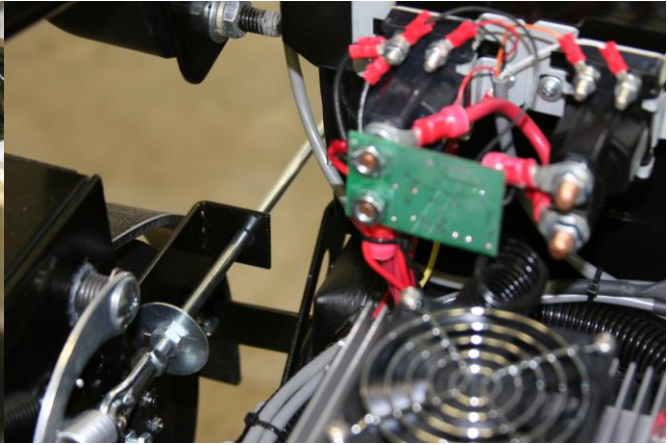


Only cut the plastic wire ties that secure the Power receptacle cable(s), including the ties that keep the black corrugated plastic cover closed.

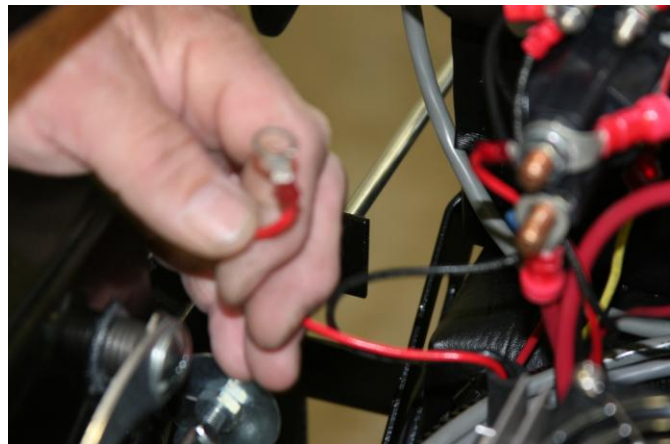
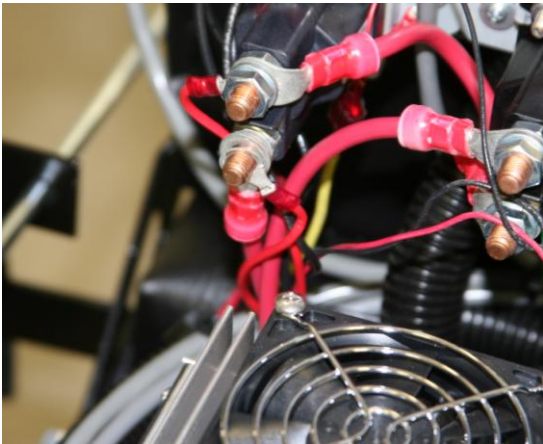
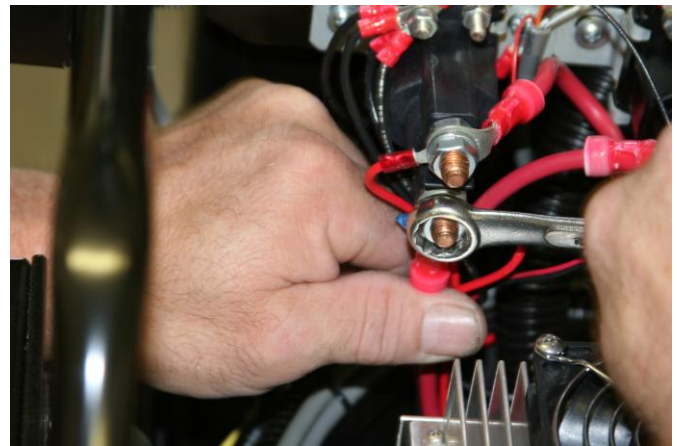
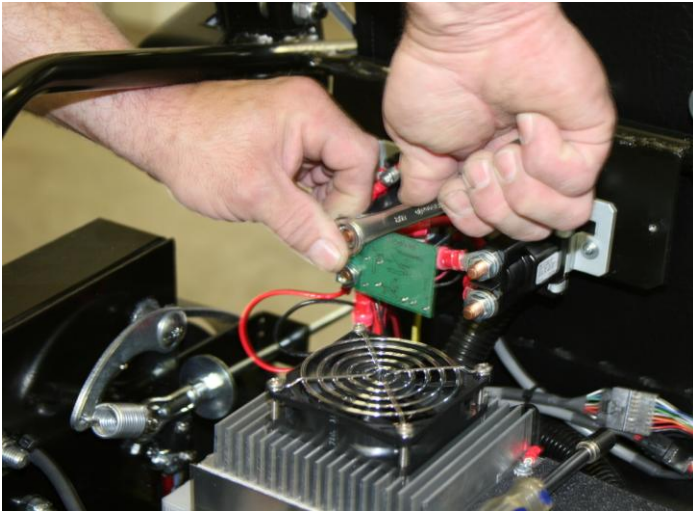


Slip off the black corrugated plastic cover from the portion of the power receptacle cables/wires that go up to the wire connector posts. (There is a slit on the side of the black corrugated plastic cover) Then you may continue snipping the remaining 2 plastic wire ties that go up to the wire connector posts.

DON'T ACCIDENTALLY CUT THE WIRES



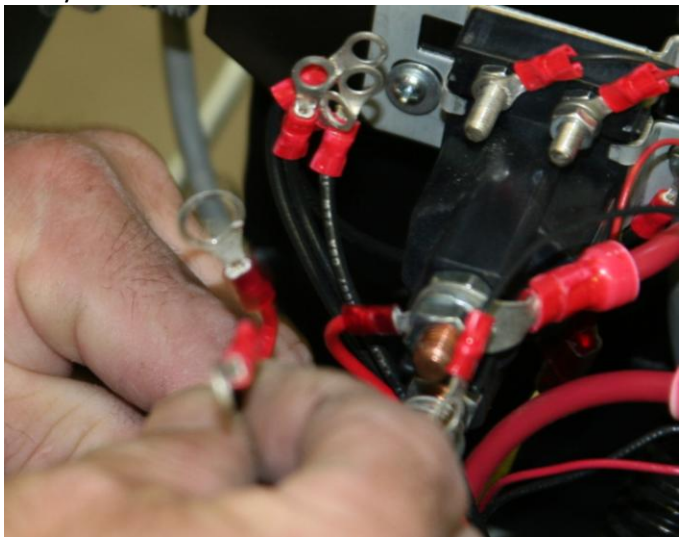
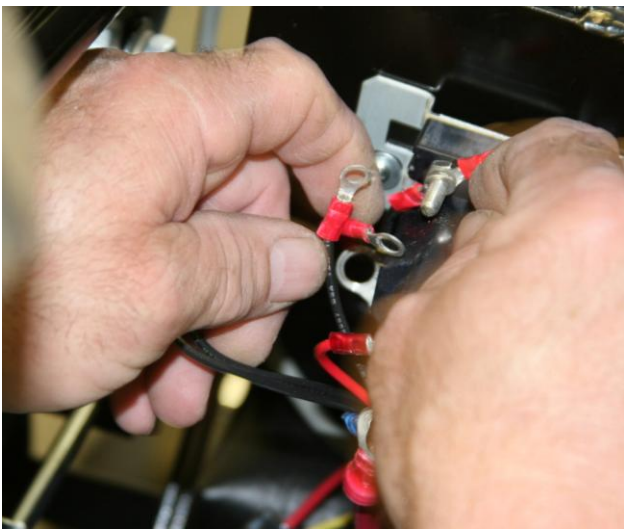
After the power receptacle wires are freed up, use the $\frac{1}{2}$ " wrench to CAREFULLY remove the nuts that secure the green circuit board. Afterwards, remove the nut that holds the metal loops that are attached to the **lower left post**.

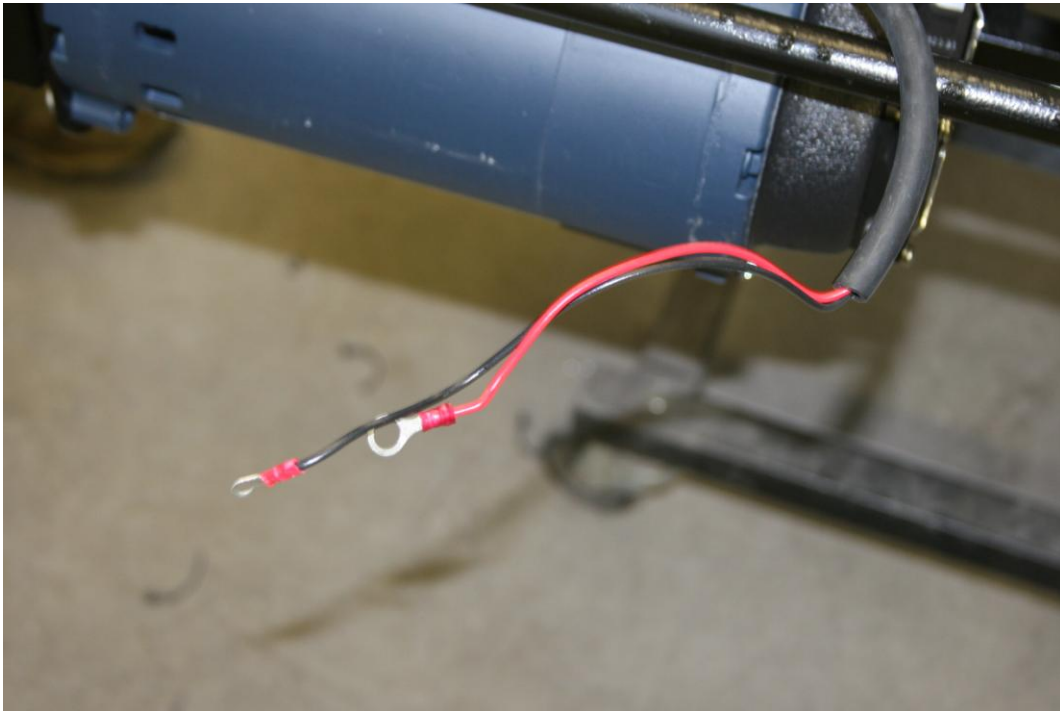


Then, use the $\frac{5}{16}$ " nut driver to remove the top left nut that secures the metal loops to that top left post.

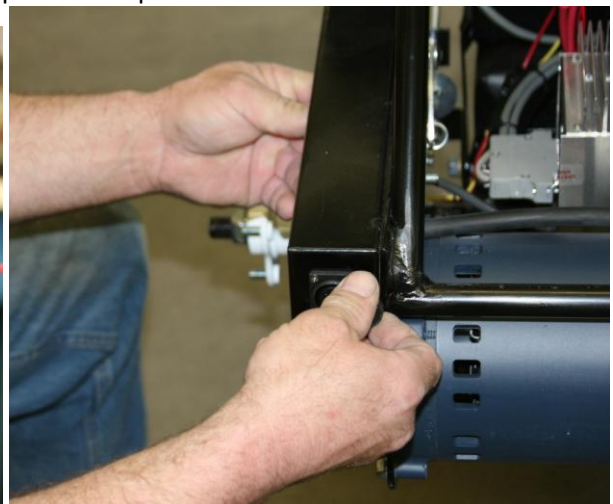


Move the released wires from the two posts out of the way.





Remove the plastic receptacle by holding the Philips screwdriver into the screw in the back of the plastic casing. Then, remove the screw by rotating the plastic cover for the power receptacle on the back of the drive wheel box.





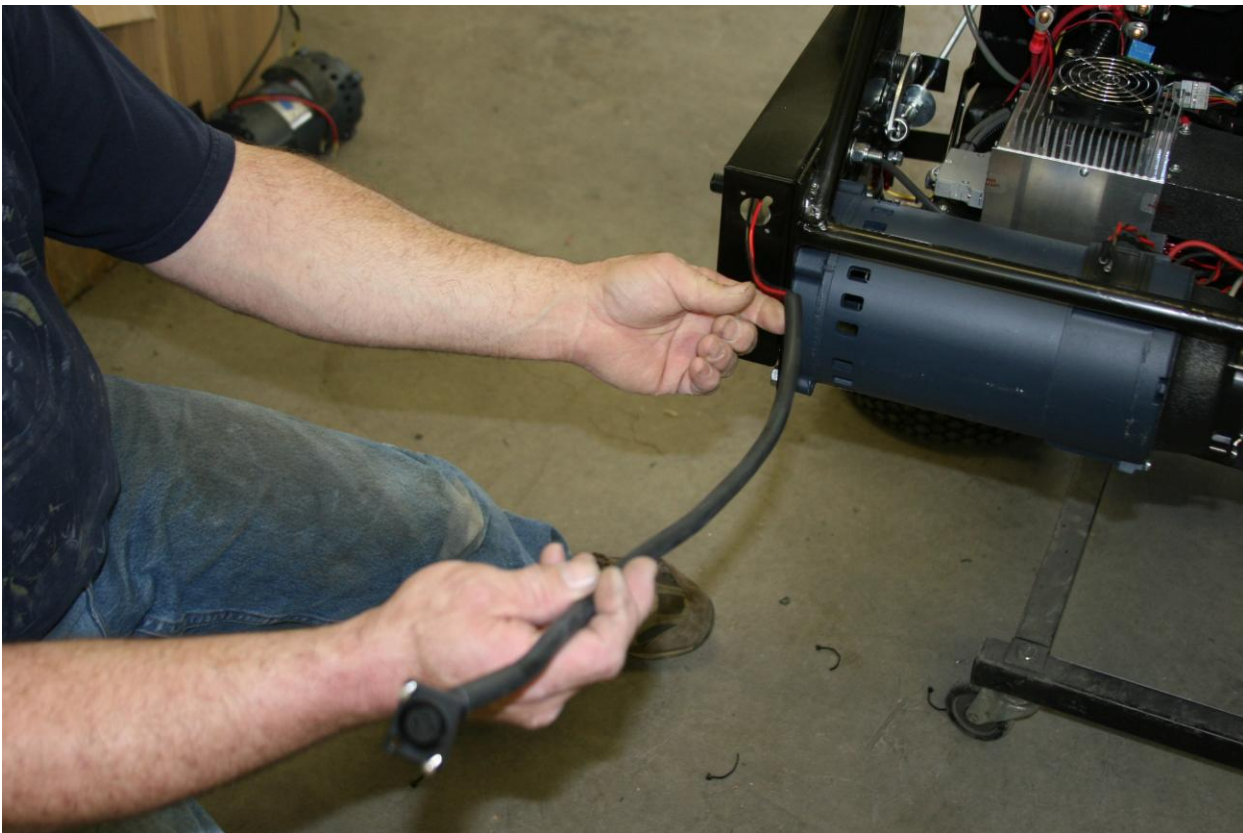
Afterwards, remove the other tiny screws that hold the plastic receptacle casing. Afterwards don't pull the wire out, but carefully push it out. The heat shrink wrap must not be pulled away from the wires.



Don't lose the screws-



And you are ready to replace the receptacle power cord with the new power cord w/recepticle.



NOW to reverse the process-

WATCH VIDEO TO REPLACE THE NEW POWER CORD RECEPTICLE