

INSTRUCTIONS: *CAUTION!* BE SURE TO DISCONNECT BOTH BATTERIES BEFORE ATTEMPTING THIS PROCEDURE! BE CAREFUL TO FOLLOW THE FOLLOWING STEPS IN THE ORDER THEY ARE GIVEN.

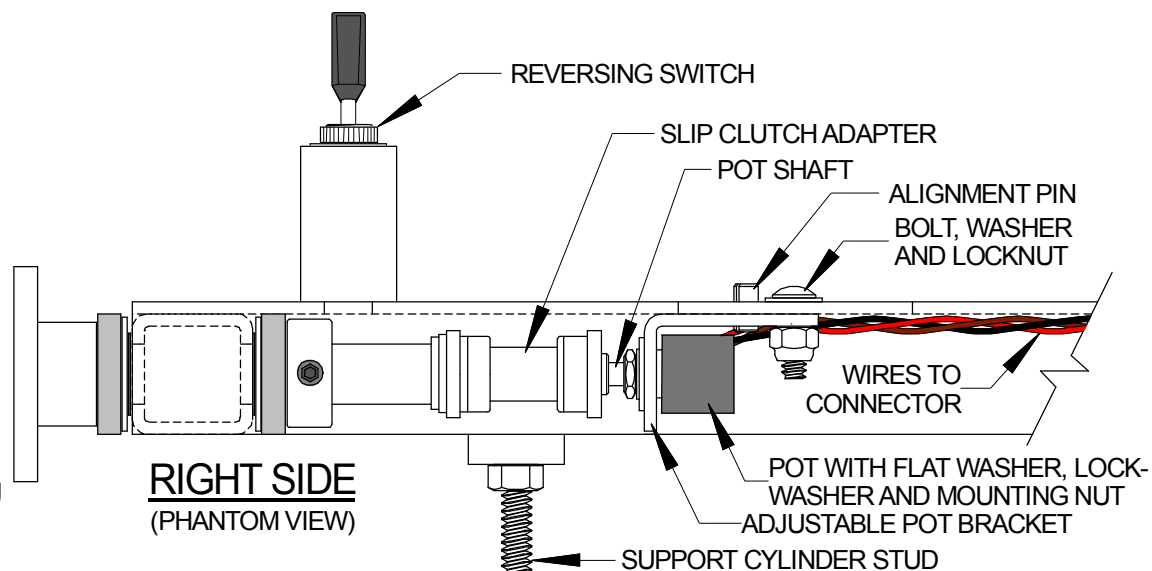
1. First disconnect the POT CONNECTOR as shown below in the INTERCONNECT section. It may be necessary to cut the wire tie that holds the wiring to the steering column.
2. Then remove the BOLT, WASHER AND LOCKNUT securing the ADJUSTABLE POT BRACKET to the steering column.
3. Now slide the pot and bracket assembly away from and out of the ADAPTER and remove the assembly from the kart.
4. On the assembly, remove the POT MOUNTING NUT, the LOCK WASHER and the FLAT WASHER.

5. Attach the new POT to the ADJUSTABLE POT BRACKET using the FLAT WASHER, LOCK WASHER and POT MOUNTING NUT in the order shown but DO NOT tighten the nut at this time. The POT must be free to move as required for exact alignment with the ADAPTER when installed.

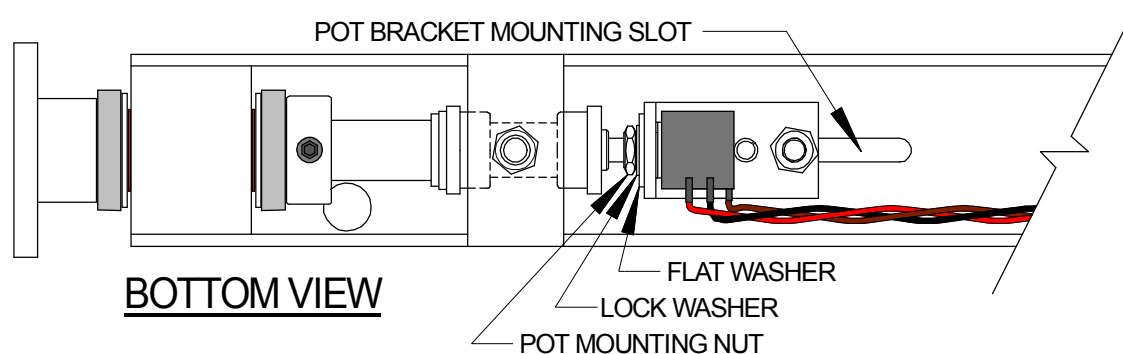
Proper alignment of all components is critical. Failure to follow this procedure carefully will damage the new pot.

6. With the POT only loosely secured to the POT BRACKET, carefully slide the POT SHAFT into the SLIP CLUTCH ADAPTER making sure the ALIGNMENT PIN on the bracket is in the POT BRACKET MOUNTING SLOT.
7. Slide the assembly toward the SLIP CLUTCH ADAPTER until the POT MOUNTING NUT is close to the ADAPTER but not in contact with it.
8. Install the BOLT, WASHER AND LOCKNUT as shown and carefully tighten the LOCKNUT making sure the assembly is not moved.

9. Now tighten the POT MOUNTING NUT using a half-inch open end wrench or similar. Be careful not to force the POT out of alignment while doing this.
10. Route the wires from the pot as shown, connect the PLUG to the POT CONNECTOR and secure the wiring with a new wire tie.
11. Turn the steering wheel several turns in each direction and check for any indications of stress on the pot assembly.
12. Done! Good Job!



PRESS HERE TO DISCONNECT



SCALE = 1:2

CUSTOMER SERVICE DRAWING	
REPLACING THE STEERING POTENTIOMETER	
DATE DRAWN 5/13/2014	PART NUMBER OINKA-1016-D
DRAWN BY JRN	REVISION D
APPROVED BY	SERVICE DRAWING NUMBER #SERV-0003-D